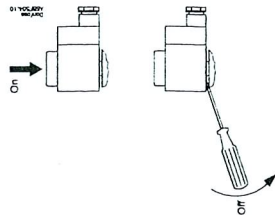
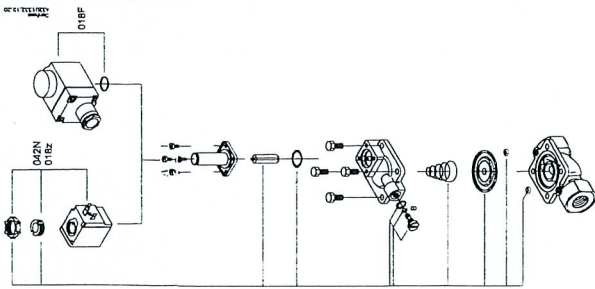
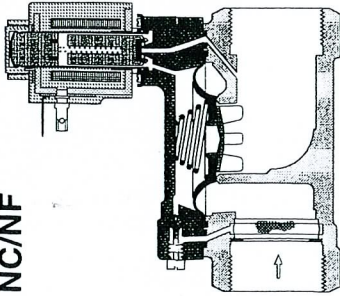
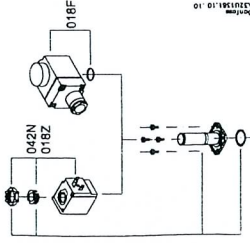
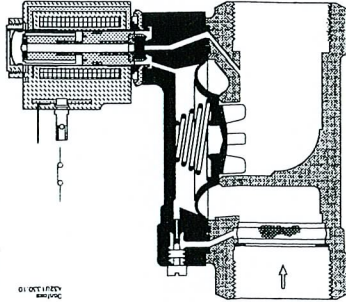


032R9346

NC/NF



NO/NA



Type	Seal material	Code no.
DN15	EPDM(WD)	032U0296
	FKM(OL)	032U0295
	NBR(OLW)	032U0299

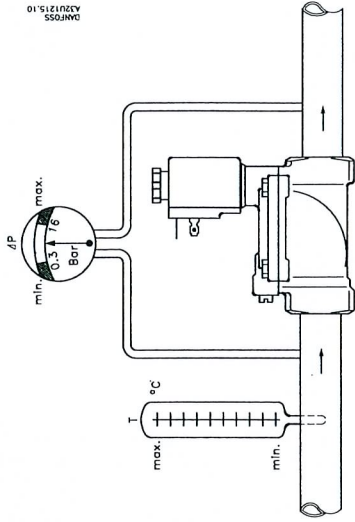
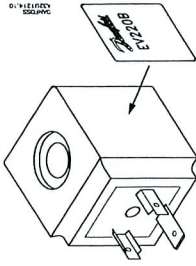
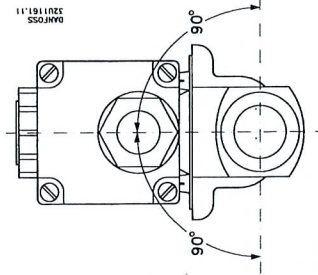
032R9346

Brass and gun metal versions (NC only)		
Type	Seal material	Code no.
DN15	EPDM(WD)	032U1071
	FKM(OL)	032U1072
	NBR(OLW)	032U6013
DN20	EPDM(WD)	032U6005 ¹⁾
	EPDM(WD)	032U1073
	FKM(OL)	032U1074
DN25	NBR(OLW)	032U6014
	EPDM(WD)	032U6006 ¹⁾
	EPDM(WD)	032U1075
DN32	FKM(OL)	032U1076
	NBR	032U6015
	EPDM(WD)	032U6007 ¹⁾
DN40	EPDM(WD)	032U1077
	FKM(OL)	032U1078
	NBR(OLW)	032U6016
DN50	EPDM(WD)	032U6008 ¹⁾
	EPDM(WD)	032U1079
	FKM(OL)	032U1080
DN60	NBR(OLW)	032U6017
	EPDM(WD)	032U6009 ¹⁾
	EPDM(WD)	032U1081
DN63	FKM(OL)	032U1082
	NBR(OLW)	032U6018
	EPDM(WD)	032U6010 ¹⁾

1) incl. WRC

DZR brass and stainless steel versions		
Type	Seal material	Code no.
DN15	EPDM(WD)	032U6320 ¹⁾
	FKM(OL)	032U6326
DN20	EPDM(WD)	032U6321
	FKM(OL)	032U6327
DN25	EPDM(WD)	032U6322
	FKM(OL)	032U6328
DN32	EPDM(WD)	032U6323
	FKM(OL)	032U6329
DN40	EPDM(WD)	032U6324
	FKM(OL)	032U6330
DN50	EPDM(WD)	032U6325
	FKM(OL)	032U6331

1) incl. WRC



NC/NF - NO/NA	
Δp	0.3 → 16 bar (EPDM/NBR)
Δp	0.3 → 10 bar (FKM)

DANFOSS
AS2U1215.10

Type	Type BA	Type BB/BE	Type BG	Type BO
	9 W AC 15 W DC	10 W AC 18 W DC ¹⁾	20 W DC	Ex 10 W AC
	[°C]	[°C]	[°C]	[°C]
EPDM (WD) (incl. WRC)	-30 - +100	-30 - +120 140°C/4 bar ¹⁾ max. 100	-30 - +120 140°C/4 bar	-30 - +90
FKM (OL)	0 - 100 (Water: max. 60) (Agua: máx. 60)	0 - 100 (Water: max. 60) (Agua: máx. 60)	0 - 100 (Water: max. 60) (Agua: máx. 60)	0 - 90 (Water: max. 60) (Agua: máx. 60)
NBR (OLW)	-10 - +90	-10 - +90	-10 - +90	-10 - +90

Limpieza/
Cleaning



DANFOSS
AS2U1215.10